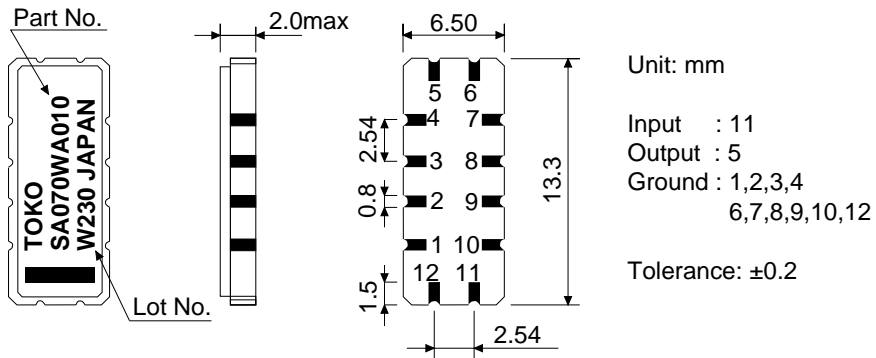


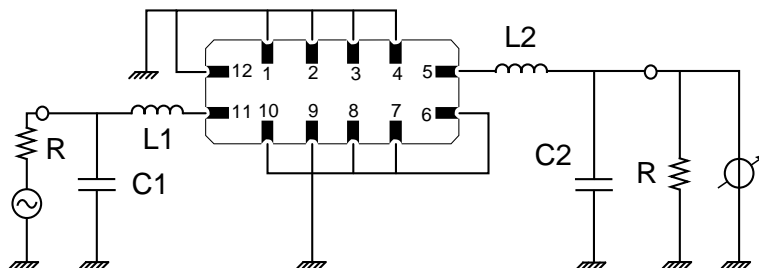
1. Overall Dimensions



2. Electrical Characteristics

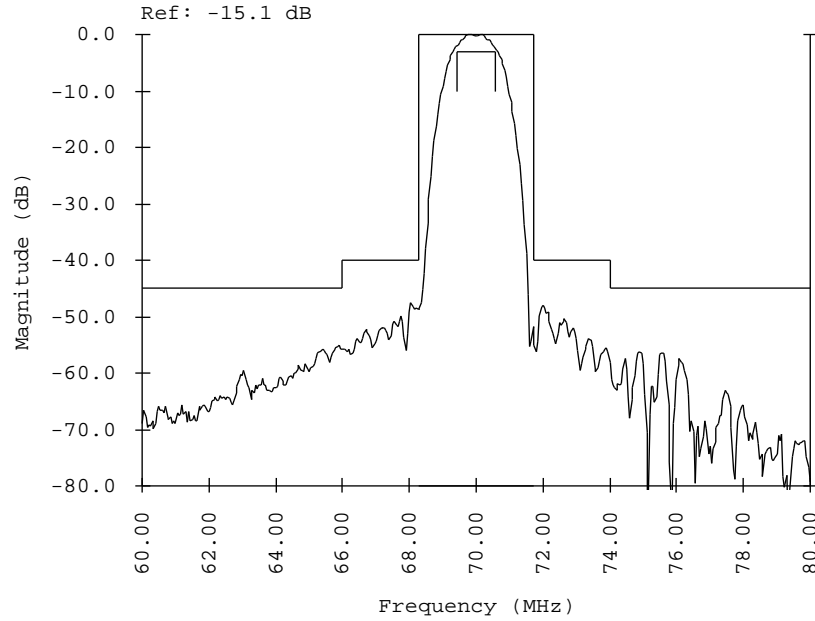
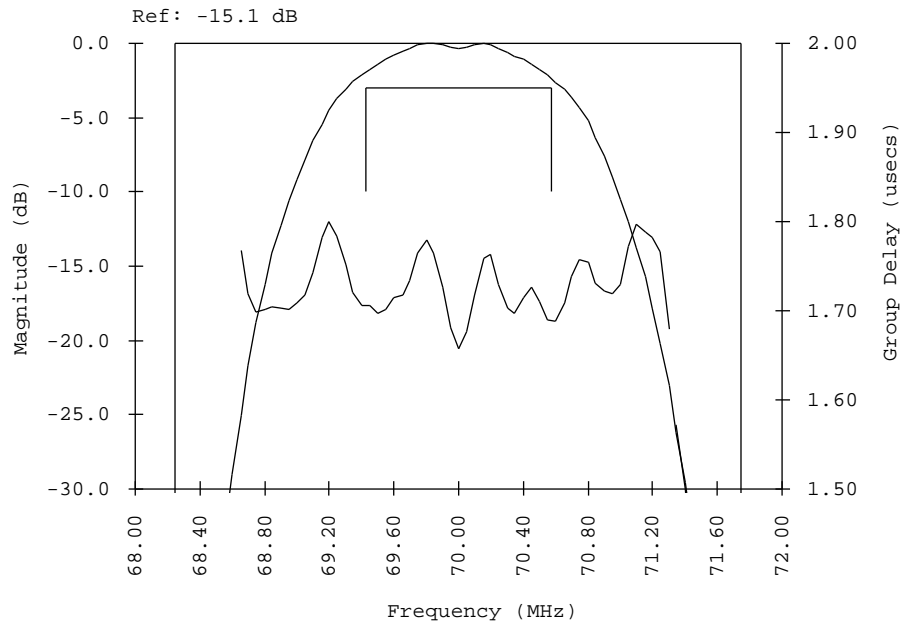
2.1	Center Frequency (Fo)	:	70.0 MHz
2.2	Passband Width Fo ± 0.575 MHz	:	3 dB
2.3	Stopband Attenuation		
	35.00 --> Fo - 4.00 MHz	:	45 dB min
	Fo - 4.00 --> Fo - 1.75 MHz	:	40 dB min
	Fo + 1.75 --> Fo + 4.00 MHz	:	40 dB min
	Fo + 4.00 --> 120.00 MHz	:	45 dB min
2.4	Passband Ripple	:	0.5 dB max @ Fo ± 0.30 MHz
2.5	Insertion Loss	:	17.0 dB max. at Fo
2.6	Group Delay Deviation	:	0.250 µsecs p/p max at Fo ± 0.575 MHz
2.7	Intermodulation	:	TBD
2.8	Maximum Input Power	:	TBD
2.9	Operation Temperature	:	-20 -> 70 °C
2.10	Load impedance		
	Input	:	3.6 kΩ    -8.5 pF
	Output	:	4.5 kΩ    -8.1 pF

3. Test Circuit



R = 50 Ω  
C1 = 68 pF  
L1 = 620 nH  
L2 = 620 nH  
C2 = 68 pF

4. Sample Data



Surface Acoustic Wave Filter

TOKO No: SA070WA-010

2/13/96

4. Sample Data (Cont.)

**TOKO INC.**

Surface Acoustic Wave Filter

TOKO No: SA070WA-010

2/13/96

**TOKO INC.**